

Division of Academic Affairs Student Assistant Handbook

August 2017

Contents

Welcome	3
Position Description.....	3
Definition	3
Classifying.....	3
Work Hours	3
Benefits/Paid Time Off	3
Confidentiality.....	3
Time Reporting	3
Skillport Training ⁴	
Tips for Success	4
Overview of Academic Affairs	4
CSUMB Campus Student Support Services.....	6
Common Student Questions	8
Campus Contacts	10
Appendix A: Org Charts	13
Appendix B: Enrollment Fast Facts	20

Welcome

Welcome and thank you for being a student assistant in Division of Academic Affairs at CSUMB. You play an important role on campus in the office you work for. This handbook was created to serve as a guide and answer questions regarding Academic Affairs. Many of our students work in offices across campus where they get asked a number of questions and we want you to be prepared with the answers. The material below will not answer every question you get, but will be able to help guide you where to find the answers. This will supplement the materials your supervisor will provide to you.

Position Description

Definition: A Student Assistant is a temporary, part-time worker who is currently enrolled in, at minimum, a half-time credit load with the primary goal of achieving a degree. Full-time and half-time status is defined by each campus based on its academic term. An academic term is defined as the time a campus conducts classes and are on a semester (fall/spring) basis. Student Assistants are intended to supplement operational needs. Work hours are flexible to accommodate the academic program of the student.

Classifying: Student Assistants work under supervision and perform administrative, clerical, manual, skilled, technical or other duties ranging from routine to advance.

Work Hours: When school is in session, Student Assistants may work up to, but not exceed, 20 hours per week. When school is not in session due to semester academic breaks and summer recess, Student Assistants may work up to a maximum of 40 hours per week but shall not be scheduled, nor permitted, to work overtime. Upon graduation, Student Assistants may work up to the last official day of the academic term. In addition, campuses may allow graduating Student Assistants to work one term immediately following graduation, up until the day before the next term starts. For example, at semester system campuses Student Assistants graduating in the spring term may work through the summer period up until the day before the fall term begins.

Benefits/Paid Time Off: Student Assistant classifications are not eligible for health benefits, vacation, sick leave, holiday pay or any other paid time off. Time used by Student Assistants for jury duty or when summoned as a witness, shall be treated as an excused absence without pay. A Student Assistant who is a member of any reserve component of the United States Armed Forces, who is voluntarily or involuntarily ordered to extend U.S. military service, shall be granted time off without pay

Confidentiality: During the course of your employment with the University, you may have access to sensitive and or personal information regarding our students, faculty and staff. Information may include, but is not limited to, student loans or financial records, student academic records, and employee personnel history and files. Such information should be treated in a confidential manner and should not be part of any public or private conversation.

Time Reporting

State Student Assistant employees use CMS Student/HR to enter all hours worked. Hours must be entered by the late date in the pay period.

1. Navigate to: **MB Employee Self Service > Timesheet.**
2. Enter the hours worked for each day you worked (do not include unpaid meal periods)
3. Enter your hours in **12-hour format** with **a** for AM and **p** for PM (i.e. for 1:00 pm type **1:00p**), or in **24-hour format** (i.e. for 1:00 pm type **1300**)
4. If you did not take a break, use only the **In** and **Out**
5. Click the **Submit** button to submit your time so your department Timekeeper can approve it
6. All **Time** must be approved by the Timekeeper within 3 business days after the last day of the pay period

Online Job Aid available at csumb.edu/payroll/student-assistant-timesheet

Skillport Training

Skillport is an online eLearning system that is used by stateside staff and faculty for mandatory, recommended and optional skills development. Students may also take optional skills development trainings. The courses, books and videos can be taken from the comfort of your computer. They are only one click away, and all of them are FREE of charge! Skillport can be accessed through the dashboard and you log in using your OtterID and password.

There are trainings available in a wide range of subjects, when you have time available review the trainings and see what fits with your job or interests you. Hint: These are great to add to resumes.

Tips for Success

- Arrive On Time
- Be Prepared to Work
- Come with a Smile and Positive Attitude
- Dress Appropriately
- Ask Questions
- Take Your Time on Assignments
- Pay Attention to Detail
- If you need extra time to do your school work, or go to a study group ask your supervisor. You are here first and foremost to be a successful student. We want to help you.

Overview of the Division of Academic Affairs

There is a Provost and Vice President for Academic Affairs, Dr. Bonnie Irwin. The Division of Academic Affairs oversees and supports the teaching, learning and assessment activities on campus. There are 24 majors and 6 master degree programs housed in 5 academic colleges within the university. Each college is headed by a Dean. Org charts for each College are in appendix A.

1. College of Arts, Humanities and Social Sciences (Dean Ilene Feinman)
2. College of Business (Dean Shyam Kamath)
3. College of Education (Dean Jose Luis Alvarado)

4. College of Health Sciences and Human Services (Dean Britt Rios-Ellis)
5. College of Science (Dean Andrew Lawson)
6. College of Extended Education (Interim Director Chuck Gonzalez)
7. University College and Graduate Studies (Dean Kris Roney)

Besides colleges there are a quite a few additional areas that are part of Academic Affairs

1. Academic & Centralized Scheduling. This office is responsible for creating and coordinating class schedules in CMS and web publications. Assigning classroom space and booking room spaces through 25Live.
2. Academic Senate. Since Fall 1996, the Faculty of CSU Monterey Bay has exercised its rights and fulfilled its responsibilities in the shared governance of the University by working through two formal bodies: an inclusive Academic Assembly and a representative Academic Senate, that each academic department within the colleges have a representative.
3. Center for Advising, Career and Student Success. This is a one-stop academic support center houses services for career development, student success and academic advising.
4. Center for Teaching, Learning and Assessment (TLA). The purpose of TLA is to provide faculty with support for exploring and implementing teaching, learning and assessment practices that enhance student learning.
5. Information Technology. Information Technology at CSUMB is part of Academic Affairs, is made up of seven departments, and has primary responsibility for all information technology resources on campus. The seven departments are Office of the Chief Information Officer, Center for Academic Technology, Information Systems, IT Compliance and Planning, Network Services, Technology Support Services and Wireless Education and Technology Research Center.
6. Institutional Assessment and Research. This office is disseminates data through its website, electronically and in presentations across campus. It produces the CSUMB Enrollment Fast facts each semester, which can be found on the IAR website or in appendix B.
7. Library: Offers small rooms (hold 4-6 students) for students to reserve online and use for study groups or group project meetings. Offers a reference desk for student to ask questions about materials in the library. There are books on course reserve for students to borrow vs having to purchase all of their materials. The largest classroom spaces on campus are located in the library.
8. Sponsored Programs Office. This office is the unit under the Provost's Office that provides guidance and stewardship to the entire campus community - especially faculty - with a high level of support and assistance in securing external public funds, and contracts for institutional priorities, research, scholarship, creative activities, service and outreach activities.
9. Undergraduate Research Opportunities Center. This is a cross-campus center that trains, supports, and engages students in undergraduate research. UROC students work on relevant and innovative research projects at CSU Monterey Bay and at

regional research institutions. Their work is guided by a research mentor and is supported by extensive training in research proposal writing, presentation skills, communication skills, professionalism, and graduate school preparedness. Students are also given the opportunity to communicate their work to the academic community through presentations and publications. Taken together, these experiences prepare our students for successful academic or professional careers.

10. World Theater. The World Theater at California State University, Monterey Bay is a 446-seat performing arts facility located in Seaside, California. The venue houses a professional live entertainment program, campus events and student productions, and concerts by local community groups.

CSUMB Campus Student Support Services

Collaborative Learning Center

Offers peer and professional tutoring services for all students.

Physical Location: Tanimura & Antle Family Memorial Library, second floor, suite 2125

Website: <http://csumb.edu/clc>

Phone: (831) 582-4104

Email: clc@csumb.edu

Campus Health Center

Provides urgent, primary, and ancillary care (including occupational medicine), as well as referral services to students, faculty, staff, their dependents, and guests of the CSUMB community.

Physical Location: Campus Health & Counseling Centers

Website: <http://csumnb.edu/health>

Phone: (831) 582-3965

Campus Service Center

Provides forms, information, and front counter support for Office of Admissions, Registrar, Financial Aid, and Cashiering. The CSC distributes Otter ID Cards and paychecks.

Physical Location: Student Services Building 47, First Floor

Website: <http://csumb.edu/csc>

Phone: (831)-582-5100

Email: onestop@csumb.edu

Career Development Office

Provides resources, programs and counseling on career development, internships, employment, and graduate school.

Physical Location: Tanimura and Antle Family Memorial Library, third floor

Website: <http://csumb.edu/career>

Phone: (831) 582-3845

Email: Career_Development@csumb.edu

Center for Advising, Career and Student Success

Provides quality academic advising services with professional advising staff to guide students through their academic and personal goals.

Advising Services provided include:

- Provide an assigned advisor to Freshmen, Sophomores and Undeclared students, as well as all students in certain majors
- Help students prepare 2/4 year educational plans
- Provide excellent referral services to other departments, majors, and services across campus
- Prepare students to transition into their major successfully
- Provide information to help students match their major to specific career goals
- Provide detailed advising to help remove advising holds

Physical Location: Tanimura and Antle Family Memorial Library, third floor

Website: <http://csumb.edu/advising>

Phone: (831) 582-3937

Email: academic_advisor@csumb.edu

Center for Student Success

Focused on increasing student retention by connecting, orienting and engaging students.

Services provided by the Center for Student Success include:

- Academic Goal Development
- Academic Workshops
- Personal Development Workshops
- Support for Probationary Students
- One-on-One Peer Mentor Support
- Transfer and Re-entry Student Support
- Referral Services
- Early Intervention for students who are encountering academic difficulty

Physical Location: Tanimura and Antle Family Memorial Library, third floor

Website: <http://csumb.edu/css>

Phone: (831) 582-3615

Financial Aid Office

Offers information regarding a variety of resources to help meet student meet their cost of attendance. Financial Aid Counselors are available to assist with questions regarding student loans, scholarships, and grants.

Physical Location: Student Services Building 47

Website: <http://csumb.edu/financialaid>

Phone: (831)-582-5100

Email: financial_aid@csumb.edu

IT Help Desk

Walk-in Service is available at the IT Service Desk counter. Staff at the Service Desk provide technology assistance to students, staff and faculty using the library computer and technology enhanced facilities. They also provide assistance with personal laptop computers, including getting connected to CSUMB networks and virus protection.

Physical Location: Tanimura and Antle Family Memorial Library, first floor

Website: <http://csumb.edu/it>

Phone: (831) 582-4357

Email: amarbach@csumb.edu

Personal Growth and Counseling Center

Promotes the mental health of CSUMB students in order to improve the quality of their lives and aid them in achieving academic success. Provides crisis intervention, counseling, consultation, educational outreach programs, support groups and referrals.

Physical Location: Campus Health & Counseling Centers

Website: <http://csumb.edu/pgcc>

Phone: (831) 582-3969

Email: counseling_center@csumb.edu

Student Disability Resources

Student Disability Resources (SDR) promotes the empowerment, wellness, and full integration of students with disabilities into campus life and the campus community. Provides academic and personal support services to students with disabilities in order for them to attain success.

Physical Location: Health and Wellness Services Bldg 80

Website: <http://csumb.edu/sdr>

Phone: (831) 582-3672

Email: student_disability_resources@csumb.edu

Common Student Questions

1. How do I find out who my academic advisor is? Visit the Center for Advising, Career and Student Success webpage: csumb.edu/advising. The “Meet the Staff” page indicates which staff members work with which majors. The Center for Advising, Career, and Student Success is located on the third floor of the library.

2. How can I find my faculty’s contact information (office hours, location, email, phone number)? Visit the A to Z directory (csumb.edu/directory) for location, email and telephone numbers. Refer to the syllabus and/or ask the department administrative support coordinator for office hours.

3. How do I drop/add classes?

Reply: Do you need to drop a single class or do you need to withdraw from all of them?

For a single class, go to the website and search “add/drop a class” to find detailed steps. The steps are different for fall/spring and winter/summer.

If you need to withdraw from all your classes, you must submit the appropriate withdrawal form to University College and Graduate Studies located in the Administration Building (Bldg. 1). Forms can be found at csumb.edu/ougs/how-withdraw

4. How do I register for winter and summer classes? For current CSUMB students, the process is the same for as for fall and spring. For non-current CSUMB students visit the Extended Education website for a detailed step by step guide.

<https://csumb.edu/eecreditcourses/summer-registration>

5. Where do I go for tutoring? The Cooperative Learning Center (CLC). CLC is located in the Library, second floor, room 2125.

6. How do I change my major? You must meet with an academic advisor to change majors. You may, with approval of the degree program, change a major at any time. Please contact the Center for Advising, Career & Student Success on the third floor of the library.

7. How do I get on the Deans’ list? Semester honors are awarded and the notation "Dean’s List" is posted to the permanent academic record for undergraduate students earning a 3.50 grade point average. To be eligible, students must complete a minimum of 12 letter-graded units with no incomplete grades, no grade lower than "C" and be in good standing.

8. What do I do if I am having an issue with an instructor? Try talking to the instructor to resolve the problem. If this does not work, please contact the chair of the department that offers the class. (Chairs are listed on the college org charts in the previous pages)

9. How do I apply to graduate? Visit the website and search “apply to graduate” or visit the Commencement webpage: csumb.edu/commencement

10. Where do I drop off my transcript? Where do I get a copy of my transcript? Drop off your transcript at Admissions on the 2nd Floor of the Student Services Bldg (bldg 47). You can print unofficial transcripts you from CMS. You can order official transcripts from the National Student Clearinghouse, visit the website Home page> Academics > Classes & Planning for more information.

11. What can I do to help get a job after graduation and/or get into graduate school? Contact the career development center (831) 582-3845 or career_development@csumb.edu to schedule an appointment to meet with a career advisor. It is located on the third floor of the library.

12. Where do I go for mental health (academic, personal, social, spiritual, and physical) support on campus? Personal Growth & Counseling Center (PGCC) located in the Health & Wellness Services Bldg (bldg 80)

13. Where do I go to register a disability or ask for accommodations? Contact Student Disabilities and Resources (SDR) located in the Health & Wellness Services Bldg. (bldg. 80)

14. Where do I find my financial aid counselor? Financial Aid counselors are assigned by last name. To see who yours is, check the financial aid website (csumb.edu/financialaid) and click on “contact.”

15. When is the FAFSA deadline? The FAFSA deadline can be found on the Financial Aid webpage: csumb.edu/financialaid

16. How do I apply for scholarships? Visit the financial aid webpage for a list of scholarships available to students.

17. Where do I find information regarding parking permits? Visit the website to purchase parking permits: <http://csumb.edu/parking/permits>. For a daily permit guests/students/faculty/staff can purchase one at the yellow machines in the parking lot. They take cash or card. \$1 per hour and a \$4 charge for all day.

18. Where do I go for questions related to housing? Visit the housing website: csumb.edu/housing. The Housing Office is in the Student Center.

19. Are there any services offered to students who have night classes and are worried about safety? There is a night walk service. Escorts will be provided on foot and are available 24 hours a day, seven days a week. The service is provided by CSO's Monday through Friday evenings from 5pm to midnight during the fall and spring semesters, and police officers during the times CSO's are not staffed. Call 831.655.0268 to request a night walk.

20. How do I get involved with clubs on campus? Visit Student Activities and Leadership Development webpage for information on CSUMB's clubs, there are over 100.

21. Does CSUMB have intramural sports? Yes! Please see csumb.edu/intramurals/about-us.

22. Is there an ATM on campus? An ATM is located at the Student Center (bldg 14, where Starbucks, Housing and Associated Students are located)

Campus Contacts

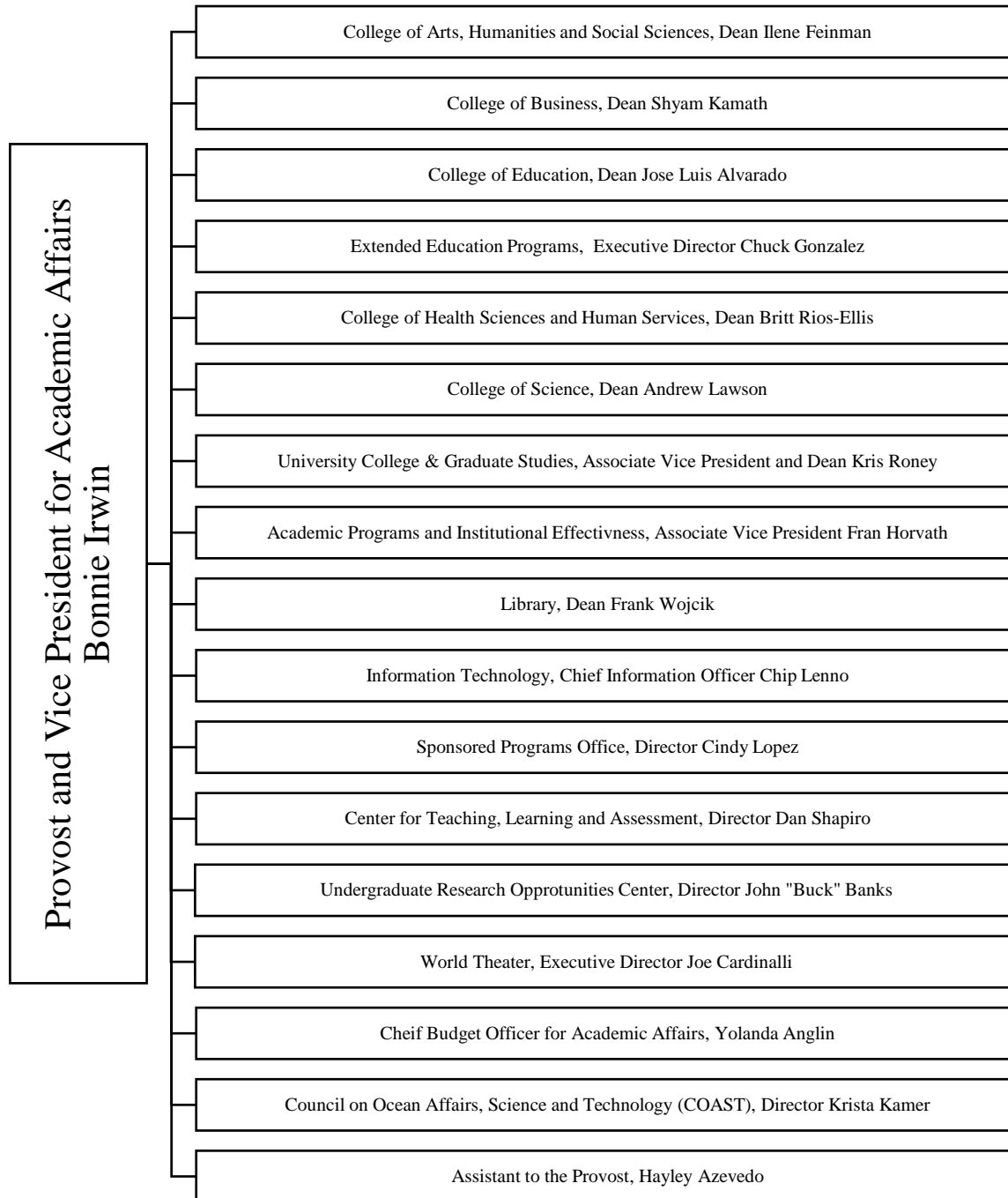
Use the A to Z Directory (csumb.edu/directory) to find all staff and faculty that work at CSUMB. Below is a list of the main academic departments in academic affairs and their contacts.

Academic Affairs Leads & Support	Support Person	Phone #
COLLEGE OF ARTS, HUMANITIES & SOCIAL SCIENCES (CAHSS)	Yolanda Perez/Linda Jenkins	4133/4189
SCHOOL OF HUMANITIES AND COMMUNICATION	Wendy Rutledge	3673
MUSIC & PERFORMING ARTS (MPA)	Marisela Lara	3009
VISUAL & PUBLIC ART (VPA)	Gail Salgado	4337
SCHOOL OF WORLD LANGUAGES & CULTURES (WLC)	Stacey Malone/David Bennett	4370/4151
SCHOOL OF SOCIAL, BEHAVIORAL & GLOBAL STUDIES (SBGS)	Rachel FitzJohn	3156

PSYCHOLOGY DEPARTMENT (PSY)	Lilly Martinez	4364
CINEMATIC ARTS & TECHNOLOGY	Jennifer Benge	3743
COLLEGE OF HEALTH SCIENCES & HUMAN SERVICES (HSHS)	Crescenda Zuccaro/Siphannay Nhean	3853/3736
HEALTH, HUMAN SERVICES & PUBLIC POLICY (HHSPP)	Haven Brearton	3565
KINESIOLOGY	Ursula Borg	4259
MASTER OF SOCIAL WORK	Vanessa Gonzales	5316
NURSING	Gina Garcia	5330
COLLEGE OF EDUCATION (COE)	John Harp/Sandie MacGowan	5174/5170
LIBERAL STUDIES (LS)	Latanya Wilson	4376
EDUCATION & LEADERSHIP	Gina Reynoso	3639
COLLEGE OF EXTENDED EDUCATION (COEE)	Alexandra Treitman	3785
EXTENDED EDUCATION: CREDIT PROGRAMS	Natalie Dickson	4501
EXTENDED EDUCATION: NON-CREDIT PROGRAMS	Karen Sellick	4142
INTERNATIONAL PROGRAMS	Jennifer Geersten	4789
COLLEGE OF BUSINESS (COB)	Elsa Johnson/Lidia Ojeda	4328/4381
SCHOOL OF BUSINESS	Desirae Bennett	4321
COLLEGE OF SCIENCE (COS)	Shirlene Campbell/Anne Baldwin	3678/3524
SCHOOL OF COMPUTING & DESIGN (SCD)	Andrea Paredes	5010
SCHOOL OF NATURAL SCIENCES	Iryna Berezhna	4110
MATHEMATICS & STATISTICS DEPARTMENT	Cynthia Bush	4191
UNIVERSITY COLLEGE	Stacy Skibinski	3756
COMMUNICATION ACROSS THE DISCIPLINES (CAD)	Hedy Wainscoat	3607
SERVICE LEARNING INSTITUTE (SLI)	Mele Paracuelles/David Collins	3805/3080
FIRST YEAR SEMINAR (FYS)	Mercedes Maciel	3806
CENTER FOR ADVISING, CAREER & STUDENT SUCCESS	Kathryn Floor	3306
COOPERATIVE LEARNING CENTER (CLC)	Monica Soto	4459
ACADEMIC AFFAIRS OFFICES	Hayley Azevedo	4401
TEACHING, LEARNING & ASSESSMENT (TLA)	Vivian Waldrup-Patterson	4574
SPONSORED PROGRAMS	Vanessa Duran	4573
INSTITUTIONAL ASSESSMENT & RESEARCH (IAR)	Michael Dorsch	3508
LIBRARY (LIB)	Nicole Janisch	3881
ACADEMIC SENATE	RJ Enriquez	4404
ACADEMIC & CENTRALIZED SCHEDULING OFFICE (ACSO)	Heather Wilde	3744
UNDERGRADUATE RESEARCH OPPORTUNITY CENTER (UROC)	Bobby Quiñonez	4241
UNIVERSITY PERFORMANCES & SPECIAL EVENTS	Allison Le	4684
INFORMATION TECHNOLOGY	Brenda Thompson	4115
NETWORK SERVICES (NS)	Kath Kettmann/Luisa Dizon	3596/3645

INFORMATION SYSTEMS (IS)	Kath Kettmann/Luisa Dizon	3596/3645
IT PLANNING AND SPECIAL PROJECTS	Brenda Thompson	4700
TECHNOLOGY SUPPORT SERVICES (TSS)	David Erwin	4523
CENTER FOR ACADEMIC TECHNOLOGY & SERVICES (CAT)	Pamela Cunha	4193

Appendix A: Org Charts



College of Arts Humanities and Social Sciences
(CAHSS)

Dean, Ilene Feinman

Associate Dean, Andy Drummond

Cinematic Arts (CineArts)

Degree Offered: Cinematic Arts, BA

Chair: Luis Camara

Music & Performing Arts (MPA)

Degree Offered: Music, BA

Chair: Richard Bains

Psychology Department (PSY)

Degree Offered: Psychology, BA

Chair: Jennifer Dyer-Seymour

School of Humanities and Communication (HCOM)

Degree Offered: Human Communication, BA

Chair: David Reichard

School of World Languages and Cultures (WLC)

Degrees Offered: Japanese Language and Culture, BA;
Spanish Languages and Hispanic Cultures, BA;

Chair: Shigeko Sekine

School of Social, Behavioral & Global Studies (SBGS)

Degrees Offered: Global Studies, BA

Social and Behavioral Sciences, BA

Chair: Ruben Mendoza

Visual and Public Art Department (VPA)

Degree Offered: Visual and Public Art, BA

Chair: Angelica Muro

College of Business (COB)
Deam, Shyam Kamath

School of Business
Degrees Offered:
Business Administration, BSBA
Sustainable Hospitality Management, BSSHM
Master of Business Administration, MBA
Chair: Marylou Shockley

College of Education (COE)
Dean, Jose Luis Alvarado

Liberal Studies Department (LS)
Degrees Offered: Liberal Studies BA
Human Development and Family Studies, BA
Chair: DeeDee Perez-Granados

Education and Leadership Department
Degree Offered: Master of Arts in Education
Teaching Credentials
Chair: Cathi Draper-Rodriguez

College of Health Sciences and Human Services (HSHS)
Dean, Britt Rios-Ellis

Health, Human Services and Public Policy Department (HHSPP)
Degree Offered: Collaborative Health and Human Services, BA
Chair: Daramola Cabral

Kinesiology Department (KIN)
Degree Offered: Kinesiology, BS
Chair: Kent Adams

Nursing Department
Degree Offered: Nursing, BSN
Chair: Frances Munet-Vilaro

Social Work Department (SW)
Degree Offered: Master of Social Work, MSW
Chair: Karen Rotabi

College of Science (COS)

Dean, Andrew Lawson

Mathematics and Statistics Department (Math)

Degree Offered: Mathematics, BS

Chair: Hongde Hu

School of Computing and Design (SCD)

Degree Offered: Communication Design, BS;

Computer Science, BS;

Instructional Science and Technology, MS

Chair: Bude Su

School of Natural Sciences (SNS)

Degree Offered: Biology, BS;

Environmental Studies, BA;

Environmental Science, Technology and Policy, BS;

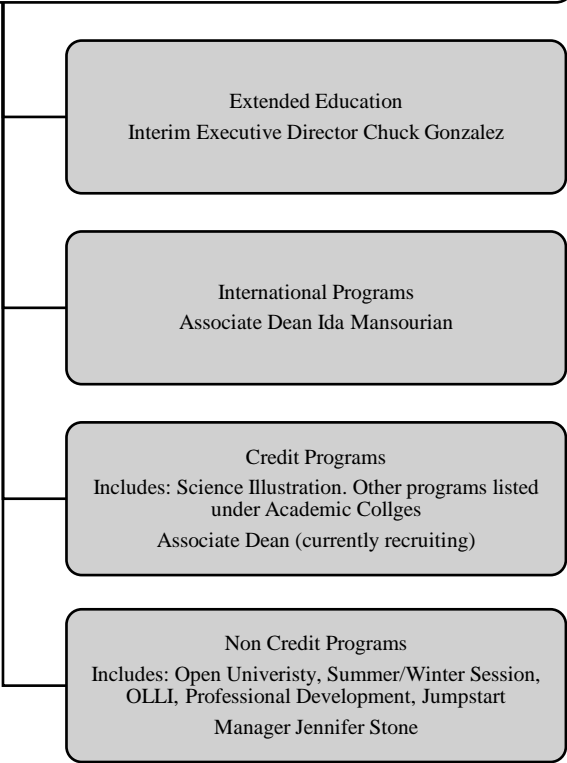
Marine Science, BS;

Applied Marine and Watershed Science, MS;

Marine Science, MS

Chair: Suzy Worcester

College of Extended Education
and International Programs
Dean (Vacant)



Univeristy College and Graduate Studies
Dean Kris Roney

Service Learning Institute (SLI)
Director Seth Pollack

Communication Across the Discipline (CAD)
Director Nelson Graff

First Year Seminar (FYS)
Coordinator Swarup Wood

Center for Advising, Career and Student Sucess
Director Tamera Pullins

Collaborative Learning Center (CLC)
Director Jay Singh

General Education Committee
Chair Miguel Lopez

Appendix B: Enrollment Fast Facts

ENROLLMENT FAST FACTS (HEADCOUNTS) FOR SPRING 2017			
RACE / ETHNICITY			
African American	448	6%	
Asian American	492	7%	
Latino	2,872	40%	
Native American	56	1%	
Other/Decline	409	6%	
Pacific Islander	71	1%	
Two or More Races	532	7%	
White	2,265	32%	
TOTALS	7,145	100%	
GENDER			
WOMEN	4,477	63%	
MEN	2,668	37%	
TOTALS	7,145	100%	
STUDENT LEVEL			
FRESHMEN	904	13%	
SOPHOMORES	880	12%	
JUNIORS	2,031	28%	
SENIORS	2,618	37%	
GRADUATE	526	7%	
CREDENTIAL	154	2%	
POSTBACCULAUREATE	32	0%	
TOTALS	7,145	100%	
GEOGRAPHIC REGION			
TRI-COUNTY (All)	2,762	39%	
TRI-COUNTY UG	2,363	37%	
<i>MONTEREY</i>	2,006	28%	
<i>SAN BENITO</i>	187	3%	
<i>SANTA CRUZ</i>	569	8%	
OTHER CALIFORNIA	4,041	57%	
NORTHERN CAL.	1,189	17%	
CENTRAL CAL.	1,243	17%	
SOUTHERN CAL.	1,609	23%	
ALL OTHER STATES	159	2%	
OTHER COUNTRIES	183	3%	
UNKNOWN	0	0%	
TOTALS	7,145	100%	
Undergrads from under-represented groups			
ADULT STUDENTS	1,441	22%	
FIRST-GENERATION	3,688	57%	
UNDER-REP MINORITY	3,157	49%	
LOW-INCOME	2,303	36%	
AGE (Undergraduates only)			
17 & UNDER YEARS OLD	1	0%	
18-20 YEARS OLD	1,899	30%	
21-24 YEARS OLD	3,092	48%	
25-30 YEARS OLD	964	15%	
31 + YEARS OLD	477	7%	
TOTALS	6,433	100%	
FIRST MAJOR (Undergraduates only)			
Biology	519	8%	
Business Administration	875	14%	
Cinematic Arts and Technology	184	3%	
Collaborative Health and Human Services	427	7%	
Communication Design	143	2%	
Computer Science**	445	7%	
Computer Science and Information Technology**	67	1%	
Environmental Science Technology and Policy	108	2%	
Environmental Studies	149	2%	
Global Studies	110	2%	
Human Communication	440	7%	
Human Development and Family Studies	38	1%	
Integrated Studies	3	0%	
Japanese Language and Culture	39	1%	
Kinesiology	626	10%	
Liberal Studies	384	6%	
Marine Science (BS)	287	4%	
Mathematics	112	2%	
Music	66	1%	
Nursing*	42	1%	
Psychology	752	12%	
Social and Behavioral Sciences	254	4%	
Spanish Language and Hispanic Culture	37	1%	
Sustainable Hospitality Management	55	1%	
Undeclared	193	3%	
Visual and Public Art	73	1%	
World Languages and Cultures	5	0%	
TOTALS	6,433	100%	
GRADUATE PROGRAMS			
Applied Marine and Watershed Science	33	6%	
Education	84	16%	
Instructional Science and Technology**	44	8%	
Marine Science (MS)	38	7%	
Master of Business Administration (MBA)*	208	40%	
Social Work	119	23%	
TOTALS	526	100%	
Extended Education (Some Students may be included in Totals)			
Enrolled in Any Self-Support Class***	530		
Notes:			
Majors are first majors only.			
* Degree Program offered through Self Support only.			
** Degree Program offered through both State and Self Support.			
*** May also include students in degree programs.			
Except for "Enrolled in Any Self-Support Class", all data are based on Census data submitted to the Chancellor's Office.			